

# HEATER

New Nano Technology Infrared Radiant Heater

# Enterprise Introduction

---

Fujian Jinghui is located in Fuzhou, China, was established in 2006. Our Company is a leading manufacturer for infrared radiant heaters and bathroom heaters which accumulated first-class professional and technical personnel and strong marketing team. We have designed various types of heaters for factory, hospital, super market, restaurant and office building etc. JH heater has gained recognition and approval from the market.



## About us

---

 **2006**  
Established in 2006

 **200+**  
Trained Worker

 **15000**  
Exported monthly

 **150+**  
Export Country

 **10000m<sup>2</sup>**  
Existing production area

# Enterprise Introduction

---

Our heaters are popular in Europe, America, Australia. and becoming the warm choice for many places. Our heaters are good to use in indoor, semi-outdoor, outdoor places, such as room, classroom, gym, balcony, corridor, garden, smoking area, swimming pool, hot yoga center, high temperature painting workshop, greenhouse, garage, church, etc.

We adhere to the business philosophy of 'cautious and conscientious create brilliant' for over years, we have developed many energy-saving heating and cooling products with more than 30 patents. It has passed ISO9001:2015 standard, and certified with CE, CB, SAA, RoHS and ISO certificate.

JH energy saving products have been widely used by government, enterprises and many key projects, and obtained a high degree of community recognition.

# Technology Innovation

---

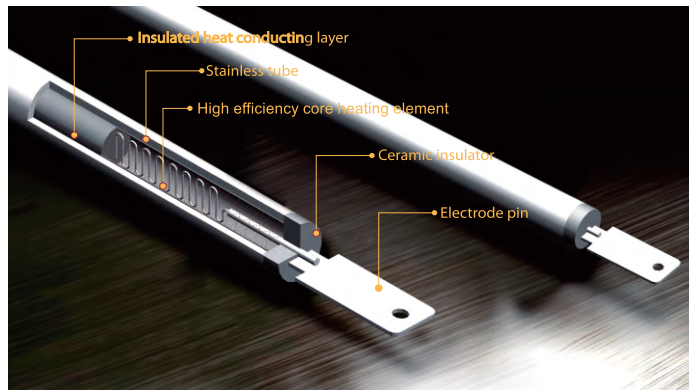
## New tech, quality guarantee

JH heater is made of finned type special aluminum alloy .It creates an obvious energy-saving effect because of high electricity-heat efficiency & high heating elements.

Heating panel is covered by special NANO painting, far infra rays will be created after warming up,

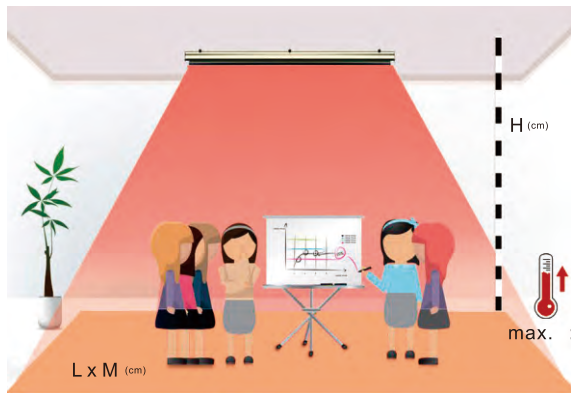
## Regenerative design, more energy-saving

JH heater adopts reflective heat storage design of proprietary intellectual property rights, to increase more than 20% efficiency, showing the best energy-saving advantages.



# Cover area

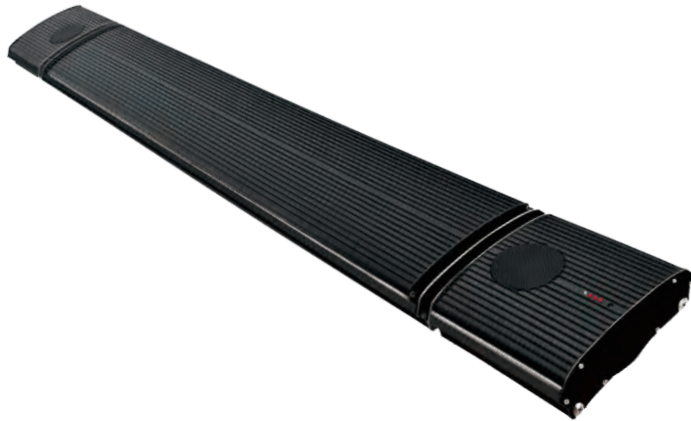
It shows the heating coverage areas of the respective models, general information about the different types of infrared radiation and their effectiveness, as well as the technical data sheets for the individual models. It thus contains all the data you need to plan. install and operate each model.



Power(kw)	L(cm)	W(cm)	H(cm)	MAX. ▲:
1.0	200	200	220	5°C
1.8	310	240	220	8°C
2.4	340	250	220	10°C
3.2	450	250	220	13°C
4.0	500	250	220	15°C

This graphic shows the heating performance of JH heater. Please note that the heat output always depends on a wide range of factors. They include installation height (1.8 to 2.2m). installation environment (indoor or outdoor, enclosed or open, wind -prone or windy), weather, radiation angle, voltage fluctuations, etc .Please consider all these factors in your planning.

# 13C Series With Bluetooth speaker



3D stereo sound Bluetooth speaker  
max connection distance is 10 meters  
(by IOS & Android)



- Power: 1000W, 1800W, 2400W, 3200W
- Voltage: 110V, 120V, 220V, 230V, 240V
- Timer: 0-8hours(0/2/4/8Hour)
- With 4 power-setting function(25%,50%,75%,100%)
- Installation: wall or ceiling mounted
- Certificate: CE,CB, SAA



# 13W Series WIFI Control Infrared Radiant Heater

Set up most 30 time logs.

Temperature Setting: 5~40°C

4 Heating Levels: 25% 50% 75% 100% power

Family Management: share control link with family members

Without Location Limitation: allowed to be operated anywhere

Group Control: up to 200pcs heaters, allowed to control one or several of them individually



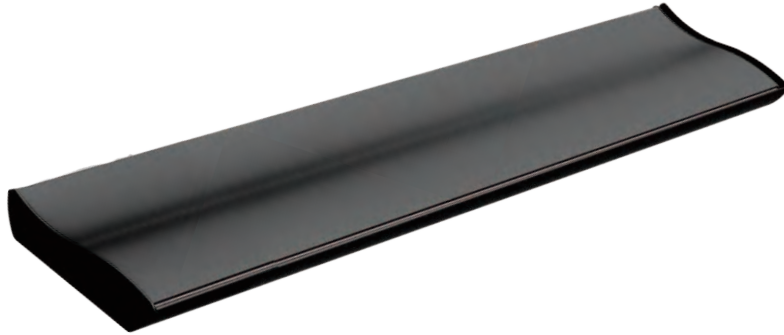
APP: Tuya Smart  
(IOS or Android available)



APP: Tuya Smart

- Power: 1000W, 1800W, 2400W, 3200W
- Voltage: 110V, 120V, 220V, 230V, 240V
- Timer: 0-8hours(0/2/4/8Hour)
- With 4 power-setting function(25%,50%,75%,100%)
- Installation: wall or ceiling mounted
- Certificate: CE, CB, SAA

# 14A Serial without controller



- Model: NR10-14A, NR18-14A, NR24-14A, NR32-14A, NR40-14A
- Power: 1000W, 1800W, 2400W, 3200W, 4000W
- Cover area: 10m<sup>2</sup>, 20m<sup>2</sup>, 30m<sup>2</sup>, 40m<sup>2</sup>, 50m<sup>2</sup>
- Voltage: 110V, 120V, 220V, 230V, 240V
- Rated current: 4.3A, 7.8A, 10.4A, 13.9A, 5.8A(3-ph)
- Surface temp: 300°C
- N/G weight: 3.6/4.8kg, 6.1/7.5kg, 8.8/10.8kg, 11.6/13.8kg
- Dimension: 600\*215\*70mm, 1000\*215\*70mm, 1500\*215\*70mm  
2000\*215\*70mm



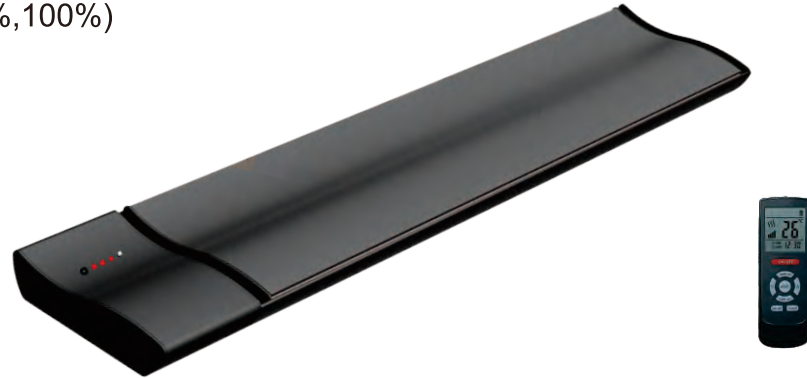


# 14B Serial With controller

Timer:0-8 hours (0/2/4/8 Hour)

Power setting:4power setting (25%,50%,75%,100%)

With remote control



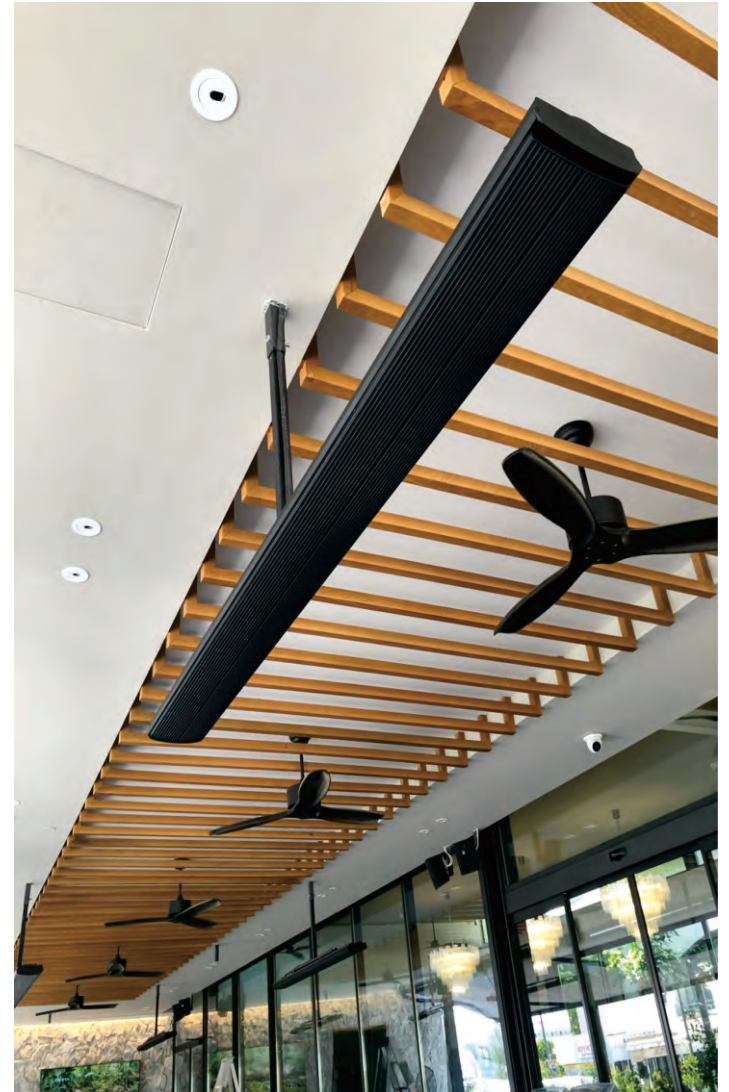
- Model: NR10-14B, NR18-14B, NR24-14B, NR32-14B
- Power: 1000W, 1800W, 2400W, 3200W
- Cover area: 10m<sup>2</sup>, 20m<sup>2</sup>, 30m<sup>2</sup>, 40m<sup>2</sup>
- Voltage: 110V, 120V, 220V, 230V, 240V
- Rated current: 4.3A, 7.8A, 10.4A, 13.9A, 5.8A
- Surface temp: 300°C
- N/G weight: 4.3/5.5kg, 6.8/8.2kg, 9.5/11.5kg, 12.3/14.5kg
- Dimension: 695\*215\*70mm, 1095\*215\*70mm  
1595\*215\*70mm, 2095\*215\*70mm

# 13A Serial

## without controller



- Model: NR10-13A, NR18-13A, NR24-13A, NR32-13A, NR40-13A
- Power: 1000W, 1800W, 2400W, 3200W, 4000W
- Cover area: 10m<sup>2</sup>, 20m<sup>2</sup>, 30m<sup>2</sup>, 40m<sup>2</sup>, 50m<sup>2</sup>
- Voltage: 110V, 120V, 220V, 230V, 240V
- Rated current: 4.3A, 7.8A, 10.4A, 13.9A, 5.8A(3-ph)
- Surface temp: 300°C
- N/G weight: 3.7/4.8kg, 6.2/7.4kg, 8.8/10.6kg, 11.4/13.4kg
- Dimension: 600\*189\*67mm, 1000\*189\*67mm  
1500\*189\*67mm, 2000\*189\*67mm



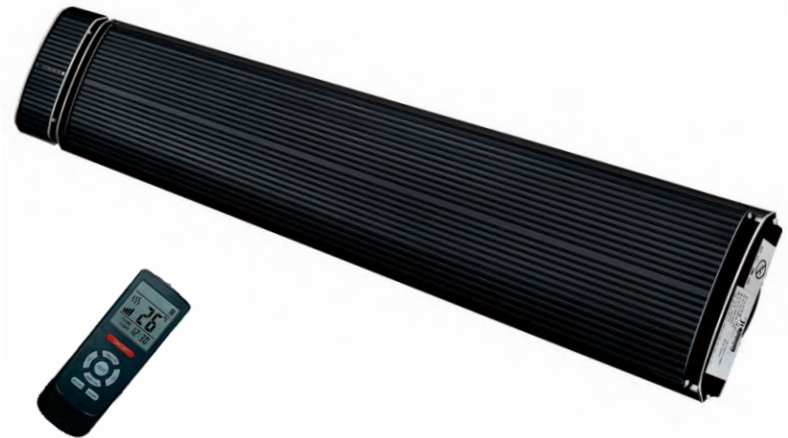
# 13B Serial

## with controller

Timer:0-8 hours (0/2/4/8 Hour)

Power setting:4power setting (25%,50%,75%,100%)

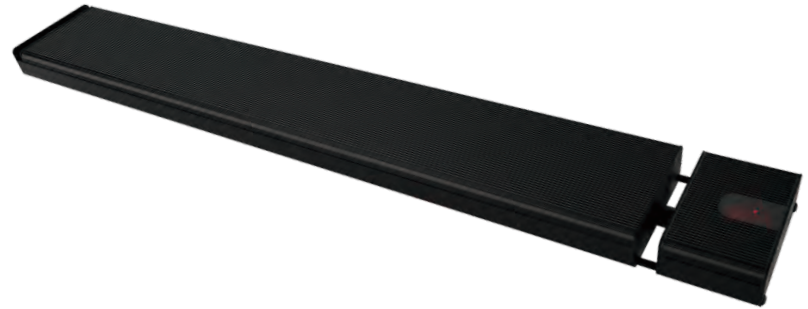
With remote control



- Model: NR10-13B, NR18-13B, NR24-13B, NR32-13B
- Power: 1000W, 1800W, 2400W, 3200W
- Cover area: 10m<sup>2</sup>, 20m<sup>2</sup>, 30m<sup>2</sup>, 40m<sup>2</sup>
- Voltage: 110V, 120V, 220V, 230V, 240V
- Rated current: 4.3A, 7.8A, 10.4A, 13.9A
- Surface temp: 300°C
- N/G weight: 4.3/5.4kg, 6.8/8kg, 9.4/11.2kg, 12.2/14.2kg
- Dimension: 695\*189\*67mm, 1095\*189\*67mm  
1595\*189\*67mm, 2095\*189\*67mm

# 23A series without controller

- Model: NR10-23A, NR18-23A, NR24-23A, NR32-23A
- Power: 1000W, 1800W, 2400W, 3200W,
- Voltage: 110V, 120V, 220V, 230V, 240V
- Rated current: 4.3A, 7.8A, 10.4A, 13.9A
- Gross Weight: 3.4kg, 5.3kg, 7.6kg, 9.9kg
- Dimension: 693\*151\*52mm, 1093\*151\*52mm  
1593\*151\*52mm, 2093\*151\*52mm



# 23W series WIFI Control Infrared Radiant Heater



Slim & Stylish Design

Indoor & Outdoor Use

Comfortable like sunshine

No smell, No light, No wind, No noise

Heat human body and animal, not the air

Tuya Smart App Control & Remote Control



- Model: NR10-23W, NR18-23W, NR24-23W, NR32-23W
- Power: 1000W, 1800W, 2400W, 3200W,
- Voltage: 110V, 120V, 220V, 230V, 240V
- Rated current: 4.3A, 7.8A, 10.4A, 13.9A
- Gross Weight: 3.4kg, 5.3kg, 7.6kg, 9.9kg
- Dimension: 693\*151\*52mm, 1093\*151\*52mm  
1593\*151\*52mm, 2093\*151\*52mm

With 4 power-setting function(25%,50%,75%,100%)

Installation: wall or ceiling mounted



# 22B series

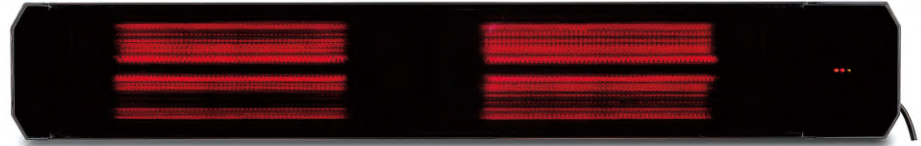
## Glass Panel Heater

Near-zero thermal expansion

High heat-resistant up to 950°C

2 power setting, 75% & 100% power

Reduction of visible light in combination  
with high infrared transmission.



APP: Tuya Smart  
(IOS or Android available)



APP: Tuya Smart



- Model: NR16-22B, NR22-22B, NR32-22B
- Power: 1600W, 2200W, 3200W
- Cover area: 20m<sup>2</sup>, 30m<sup>2</sup>, 40m<sup>2</sup>
- Voltage: 220V, 230V, 240V
- Rated current: 7A, 9.6A, 13.9A
- With 2 power-setting function (75%, 100%)
- N/G weight: 5/6.1kg, 7/8.2kg, 9.9/11.7kg
- Dimension: 810\*180\*77mm, 1160\*180\*77mm, 1660\*180\*77mm

# BF21A series

## Bathroom Heater



It provides 5-second instant heat with 1600 watt, It is waterproof and with strongly reduced light thanks to the high-quality ceramic glass screen. The heater is suitable for wall and ceiling mounting, brackets included.

- Use: Bathroom, SPA, wellness
- Protection: IP65, waterproof
- Cable: 1m 3-wire, 1.5mm
- Connection: L/N/PE, 230V-50HZ
- Power: 1600W
- Glass screen color: white
- Weight: 5.1/6.8Kg
- Dimensions: 600x300x94mm
- Case material: Corrosion-resistance anodized aluminum



# Comparision

## Advantages of JH infrared radiant heater

	JH infrared radiant heater	Air conditioner	Normal electric heater	Gas heater/Oil heater	Hot duct heating system
Energy consumption	Medium	High	High	Low	Medium
Bad smell	No	No	No	Yes	No
Environment pollution	No	Yes, Freon	No	Yes, CO, CO <sub>2</sub>	Yes, exhaust air and dust
Temperature increase time	Fast	slow	slow	slow	Medium
Extract humidity	No	Yes	Yes	Yes	No
Take floor area	No	No	Yes	Yes	Yes
Dangerous	Low surface temperature and hang high in the ceiling	No	High temperature surface	Flame fire, and gas or oil leakage risk	Water leakage happens
Installation	Simple	Complicated	No	Complicated	Very Complicated
Maintain	Easy	1 time per month	1~2 times per month	Every week	Every month
Outdoor use or spot heating	Yes	No	Yes, but low efficient	Yes, but difficult to feed fuel	No
Price	Medium	Expensive	Cheap	Medium	Expensive



## 22B Serial(Glass Panel Heater)



Model	Power (W)	Cover area (m <sup>2</sup> )	Voltage Frequency	Rated current (A)	Surface temp	Dimension(mm)	N/G weight( kg)	Container load Q'ty (20/40'/40HQ)
JH-NR16-22B	1600	20	220V~240V 50/60Hz	7	380℃	810*180*77	5/6.1	728/1638
JH-NR22-22B	2200	30		9.6		1160*180*77	7/8,2	507/1162
JH-NR32-22B	3200	40		13.9		1660*180*77	9.9/11.7	377/826

## 21A Serial(Bathroom Heater)



Model	JH-BF21A	Case material	Corrosion-resistance anodized aluminum
Use	Bathrom,SPA,Wellness	Glass screen material	Ceramic glass
Performance	2x800 watts,heating area about 10-15sqm	Glass Screen color	White
Cable	1m 3-wire,1.5mm	Carton size	650x350x145mm
Connection	L/N/PE,230V-50HZ	Weight	5.1/6.8Kg
Power	1600W	Dimensions	600x300x94mm

## 13A Serial (without controller)



Model	Power (W)	Cover area (m <sup>2</sup> )	Voltage Frequency	Rated current (A)	Surface temp	Dimension(mm)	N/G weight( kg)	Container load Q'ty (20/40'/40HQ)
JH-NR10-13A	1000	10	220V~240V 50/60Hz	4.3	300℃	600*189*67	3.7/4.8	1074/2157/2442
JH-NR18-13A	1800	20		7.8		1000*189*67	6.2/7.4	675/1350/1530
JH-NR24-13A	2400	30		10.4		1500*189*67	8.8/10.6	456/945/1071
JH-NR32-13A	3200	40		13.9		2000*189*67	11.4/13.4	360/735/833
JH-NR40-13A	4000	50	380V,50/60Hz	5.8		2000*189*67	11.4/13.4	360/735/833

## 13B Serial (with controller)



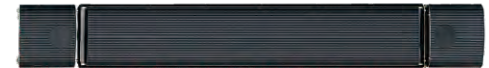
Model	Power (W)	Cover area (m <sup>2</sup> )	Voltage Frequency	Rated current (A)	Surface temp	Dimension(mm)	N/G weight( kg)	Container load Q'ty (20/40'/40HQ)
JH-NR10-13B	1000	10	220V~240V 50/60Hz	4.3	300℃	695*189*67	4.3/5.4	1000/2100/2300
JH-NR18-13B	1800	20		7.8		1095*189*67	6.8/8	640/1360/1530
JH-NR24-13B	2400	30		10.4		1595*189*67	9.4/11.2	430/860/1000
JH-NR32-13B	3200	40		13.9		2095*189*67	12.2/14.2	340/680/800

## 13W Serial (WIFI Control Infrared Radiant Heater)



Model	Power (W)	Cover area (m <sup>2</sup> )	Voltage Frequency	Rated current (A)	Surface temp	Dimension(mm)	N/G weight( kg)	Container load Q'ty (20/40'/40HQ)
JH-NR10-13W	1000	10	220V~240V 50/60Hz	4.3	300°C	755*189*67	4.4/5.5	840/1680/2100
JH-NR18-13W	1800	20		7.8		1150*189*67	6.9/8.1	530/1080/1350
JH-NR24-13W	2400	30		10.4		1655*189*67	9.5/11.3	570/900/980
JH-NR32-13W	3200	40		13.9		2155*189*67	12.3/14.3	350/700/800

## 13C Serial (With Bluetooth speaker)



Model	Power (W)	Cover area (m <sup>2</sup> )	Voltage Frequency	Rated current (A)	Surface temp	Dimension(mm)	N/G weight( kg)	Container load Q'ty (20/40'/40HQ)
JH-NR10-13C	1000	10	220V~240V 50/60Hz	4.3	300°C	970*189*67	5.8/7.3	705/1632
JH-NR18-13C	1800	20		7.8		1370*189*67	8.3/10.2	480/1156
JH-NR24-13C	2400	30		10.4		1870*189*67	11.4/13.8	355/884
JH-NR32-13C	3200	40		13.9		2370*189*67	14.5/17.5	270/612

## 14A Serial (Without controller)

Model	Power (W)	Cover area (m <sup>2</sup> )	Voltage Frequency	Rated current (A)	Surface temp	Dimension(mm)	N/G weight( kg)	Container load Q'ty (20/40'/40HQ)
JH-NR10-14A	1000	10	220V~240V 50/60Hz	4.3	300°C	600*215*70	3.6/4.8	1139/2278/2546
JH-NR18-14A	1800	20		7.8		1000*215*70	6.1/7.5	714/1460/1634
JH-NR24-14A	2400	30		10.4		1500*215*70	8.8/10.8	459/986/1102
JH-NR32-14A	3200	40		13.9		2000*215*70	11.6/13.8	374/748/836
JH-NR40-14A	4000	50	380V,50/60Hz	5.8		2000*215*70	11.6/13.8	374/748/836

## 14B Serial (With controller)

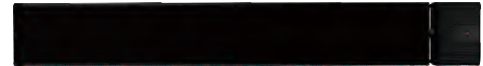
Model	Power (W)	Cover area (m <sup>2</sup> )	Voltage Frequency	Rated current (A)	Surface temp	Dimension(mm)	N/G weight( kg)	Container load Q'ty (20/40'/40HQ)
JH-NR10-14B	1000	10	220V~240V 50/60Hz	4.3	300°C	695*215*70	4.3/5.5	986/1972/2204
JH-NR18-14B	1800	20		7.8		1095*215*70	6.8/8,2	610/1290/1442
JH-NR24-14B	2400	30		10.4		1595*215*70	9.5/11.5	442/901/1007
JH-NR32-14B	3200	40		13.9		2095*215*70	12.3/14.5	357/731/817

## 23A Serial (without controller)



Model	Power (W)	Cover area (m <sup>2</sup> )	Voltage Frequency	Rated current (A)	Surface temp	Dimension(mm)	N/G weight( kg)	Container load Q'ty (20HQ)
JH-NR10-23A	1000	10	220V~240V 50/60Hz	4.3	300℃	693*151*52	3.4/4.2	1248
JH-NR18-23A	1800	20		7.8		1093*151*52	5.3/6.4	800
JH-NR24-23A	2400	30		10.4		1593*151*52	7.6/9.5	528
JH-NR32-23A	3200	40		13.9		2093*151*52	9.9/12.5	412

## 23W Serial (WIFI Control Infrared Radiant Heater)



Model	Power (W)	Cover area (m <sup>2</sup> )	Voltage Frequency	Rated current (A)	Surface temp	Dimension(mm)	N/G weight( kg)	Container load Q'ty (20HQ)
JH-NR10-23W	1000	10	220V~240V 50/60Hz	4.3	300℃	693*151*52	3.4/4.2	1248
JH-NR18-23W	1800	20		7.8		1093*151*52	5.3/6.4	800
JH-NR24-23W	2400	30		10.4		1593*151*52	7.6/9.5	528
JH-NR32-23W	3200	40		13.9		2093*151*52	9.9/12.5	412

# Thermostat Controller



Model: E2000EE

- Power: <math>< 1.5\text{W}</math>
- Timing error: <math>< 0.01\%</math>
- Voltage: 100-240V
- Frequency: 50/60Hz
- Load current: 25A
- Temperature control range:  $5^{\circ}\text{C}$ - $35^{\circ}\text{C}$
- Temperature control precision:  $\pm 1^{\circ}\text{C}$

# Accessories

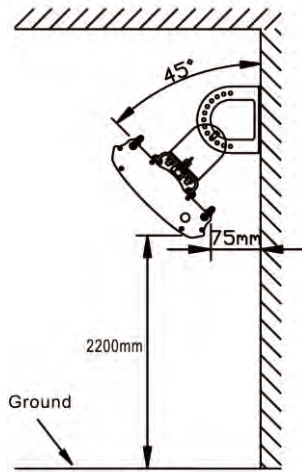


# Installation Bracket

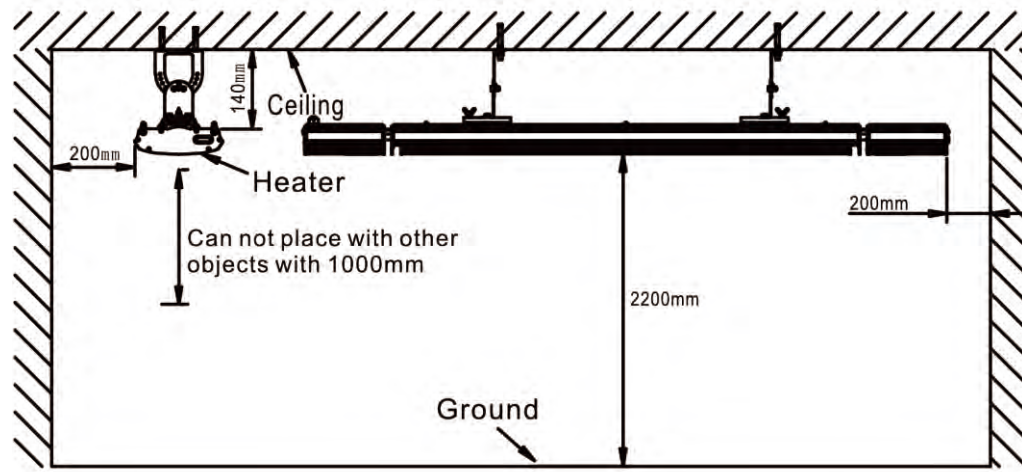
Adjustable wall/ceiling mounted brackets included



## Wall / Ceiling Mounted Installation Diagram



Install vertically in front



Ceiling installation



CE CB SAA RoHS

FUJIAN JINGHUI ENVIRONMENTAL TECHNOLOGY CO.,LTD

ADD: No.3, Wushan Road, Gaishan Town, Cangshan District, Fuzhou, China

WEB: [www.jhheater.com](http://www.jhheater.com) [www.jhcool.com](http://www.jhcool.com)